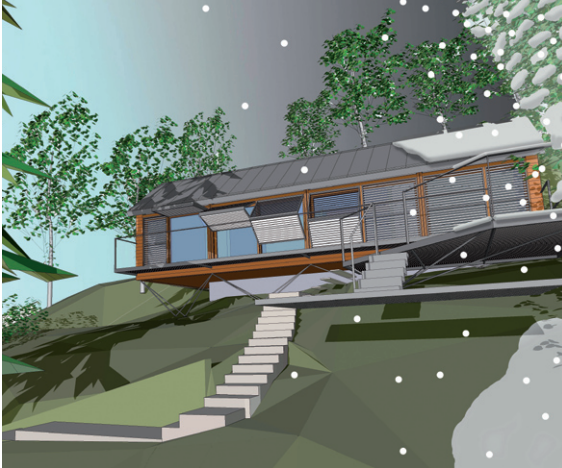


FORMATION

News, views and information from FORM Design Architecture



LOW CARBON COASTAL HOUSE STARTS ON SITE

Work has just started on site for FORM's ecologically friendly timber holiday home in Sussex. This house is replacing a remote look-out point, which was demolished as part of the programme, in a location where there is no road access. The highly insulated house will be closed up with shutters when it is not in use. An air to water heat pump will supply virtually all the hot water demand for the building including the under floor heating system, with a log burning stove to provide additional warmth as required. Other energy saving features include the harvesting of rainwater, a composting toilet and an array of photovoltaic panels.



The 2 bedroom, 70 sq m house is being constructed off-site in four sections. A cantilevered skeletal support frame will be underpinned by micro-screw piles driven into the underlying shale. The house is due to be completed summer 2009.