

FORMATION

News, views and information from FORM Design Architecture



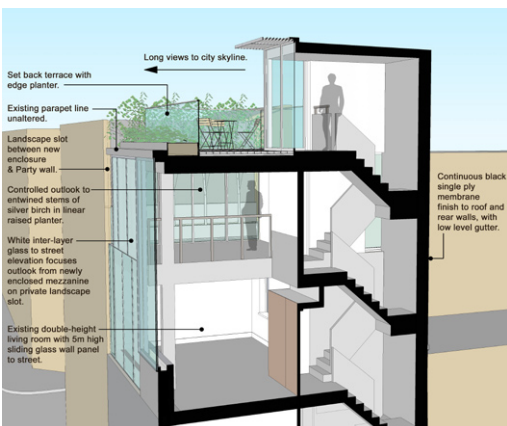
PLANNING PERMISSION WON FOR REWORKING OF WELL KNOWN HOUSE

The concrete and glass house, located just off of London's Brick Lane, was built in the 1990s by architect William Russell as his family home when he was working in partnership with David Adjaye. Sitting in an area of Victorian brick shops and industrial buildings, the structure's 'lighthouse' appearance is striking.



The key elements of FORM's design include the enclosure of a 1st floor rear lightwell area with a retractable glass roof; the partial enclosure of the 3rd floor terrace, overlooking the principle double-height living space, creating an internal mezzanine area and the extension of the concrete stair up into a roof top owner's study and terrace garden.

FORM's choice of detailing and materials continues the language of the existing house. The design also maintains the original palette of solid, clear glass and etched glass panels and exploits these to manipulate natural lighting, outlook and privacy requirements. FORM's scheme introduces carefully considered lightweight construction solutions where possible. And in order to achieve satisfactory energy calculations for a building with such large areas of glazing, FORM is dividing the house into zones and making use of offsets to balance under and over performing areas.



The outlook from the 3rd floor level, via a clear glazed end wall, is focused onto the entwined trunks of silver birch trees in a narrow raised linear planter.